

Island Stone Introduces Patina Glass Tile Collection

Elegant tile combines old-world aesthetics with modern lines for an ethereal experience

(WATSONVILLE, CA, AUGUST 11, 2020) Radiating old-world beauty, the **Patina Glass Tile Collection** from Island Stone expresses the strength of antiquity in a modern subway tile format. Architects and designers can create a variety of patterns with the individual 3½" by 12" pieces.

Setting this collection apart is a dreamy color collection, made with randomized patterns of abstract speckles and cloud-like wisps. The collection includes Akoya Pearl, a creamy neutral white with a subtle ethereal glow; Silver Lining, a soft blend of gray, blue, and white with a hint of iridescence; Champagne, a bubbly beige with traces of yellow and orange; Bright Side, a blue and white pattern inspired by the sky; and Evening Onyx, a smoky reflective patinated mirror reminiscent of antique glass. With each unique tile, the interplay of color and light helps to create a dimension of beauty that can only be fully appreciated by seeing it in person.

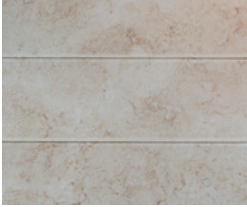
"Each color in the Patina Glass collection is unique in its style, allowing designers to combine tiles to create eye-catching, one-of-a-kind patterns," said Nigel Eaton, CEO for Island Stone. "The shine and reflection of Patina Glass is well suited for a variety



Silver Lining

of statement-making architectural uses, such as a grand backsplash in a restaurant or a chic hotel lobby, as well as for elevating the sophistication in a residential setting.”

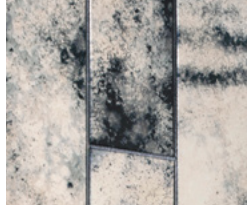
Patina Glass uses a proprietary blend of metallic oxides and reactive chemicals to give each piece a unique look and color, along with a protective coating that ensures a durable, long lasting installation even in moisture conditions such as tub and shower enclosures.



Champagne



Bright Side



Evening Onyx



Akoya Pearl

“ Each color in the Patina Glass collection is unique in its style, allowing designers to combine tiles to create eye-catching, one-of-a-kind patterns”

—NIGEL EATON, CEO OF ISLAND STONE

about island stone

Island Stone has its origins in Indonesia, where company founders were inspired by the nation’s handicraft industry and natural stones to create the flagship **Perfect Pebble Tile**. The company’s original mosaics diversified into other natural mosaics, using exotic stones. Anchored in wanderlust for exploration, culture, and design, the company continues to evolve its creative use of natural and timeless materials, sourcing from distinct locales around the globe and featuring a range of natural **stone** tiles and mosaics, **glass** tiles and mosaics, as well as natural **stone** wall tiles and **timber** wall panels and cladding. For more information visit [IslandStone.com](https://www.IslandStone.com) or call 1-800-371-0001. Follow **Island Stone on Instagram** for the latest updates.

###